

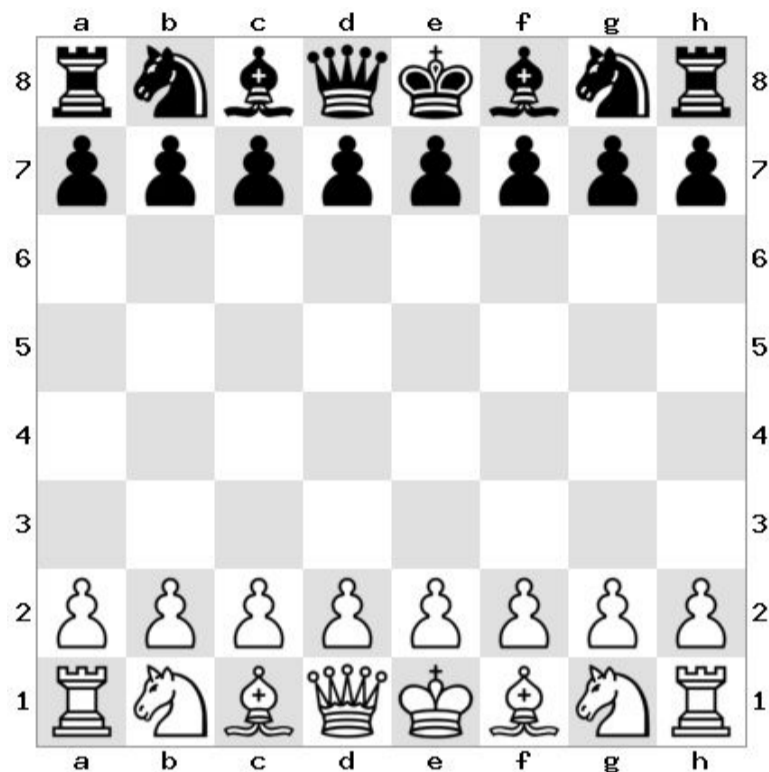
Jaque mate y Ahogado Checkmate and Stalemate

Glenn Wilson

26 Octubre 2022

26 October 2022

V 2.01



Descargue la última versión u obtenga otros libros:

Download the latest version or get other books:

<https://ajedrezreglas.com/>

Envíe sugerencias, errores y correcciones a:

Send suggestions, errors and corrections to:

Glenn Wilson: glenn@ajedrezreglas.com.



Copyright © Glenn Wilson 2022.

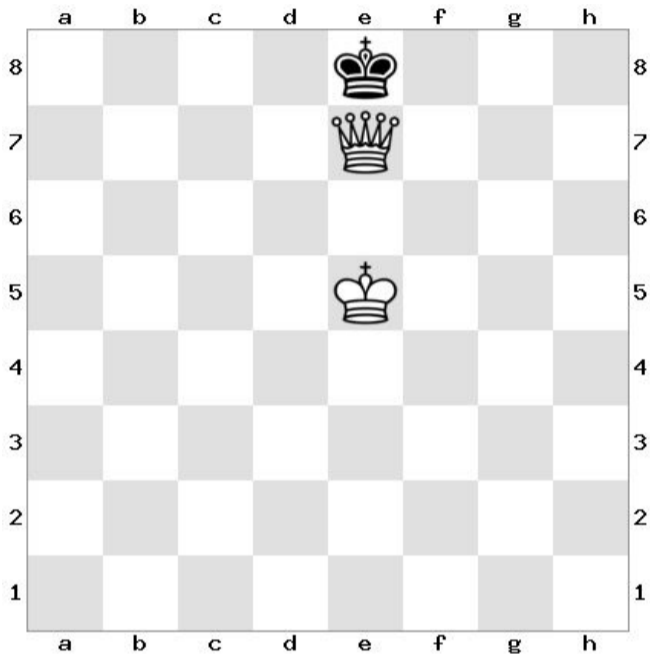
Este libro electrónico puede imprimirse o distribuirse gratuitamente para uso educativo no comercial.

This electronic book may be printed or distributed free of charge for non-commercial educational use.

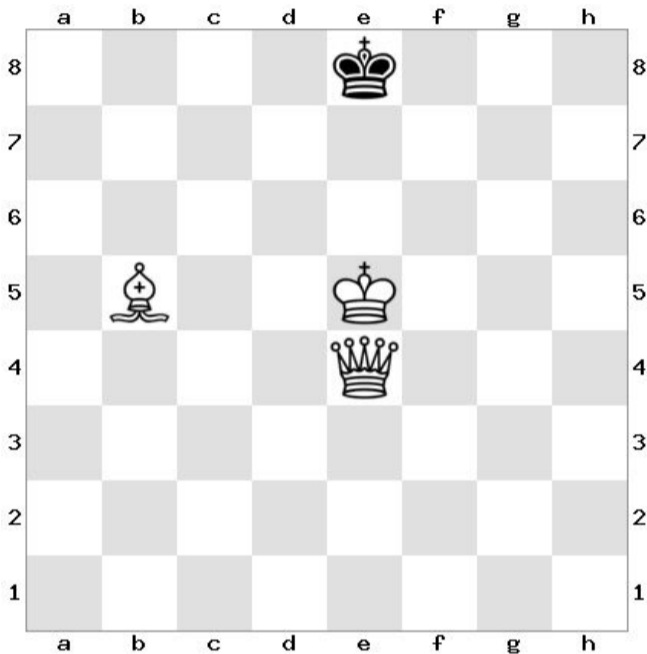
Diagramas de ajedrez de / Chess diagrams from <https://www.apronus.com/> .

Check

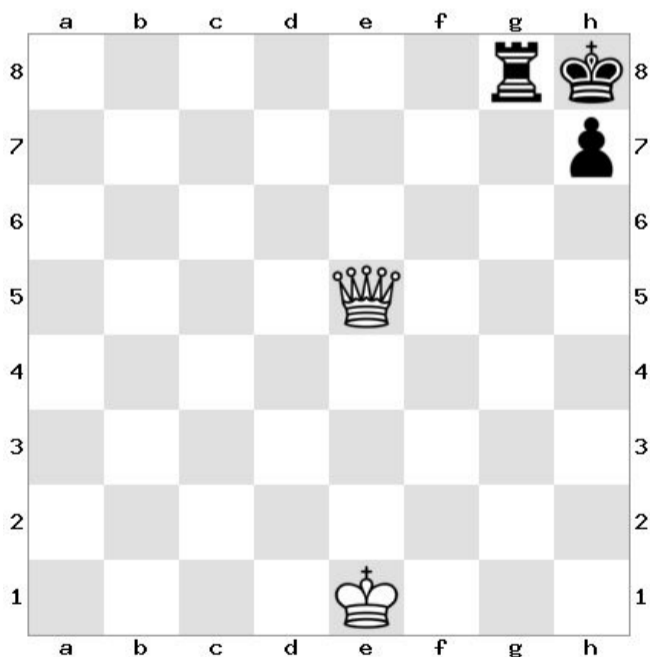
- Check is an attack (threat to 'capture') the king.
- You must get out of check if you can. If you can't, it's checkmate and the game is over.
- To get out of check, 1) capture the attacking piece, or 2) block the attacking piece, or 3) move the king out of check.



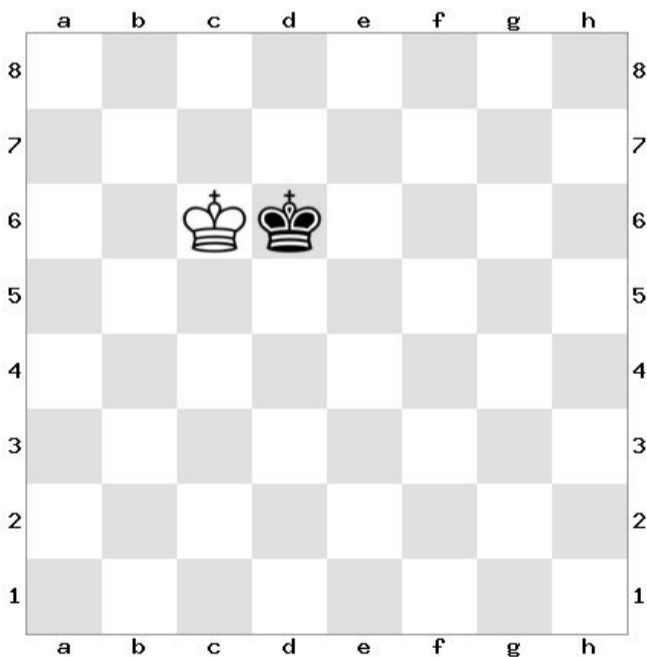
Black to play. Black is in check from the white queen. Black can get out of check by capturing the queen.



Black to play. Black is in check from the white bishop. Black can get out of check by moving the king to d8, f8, e7, or f7.



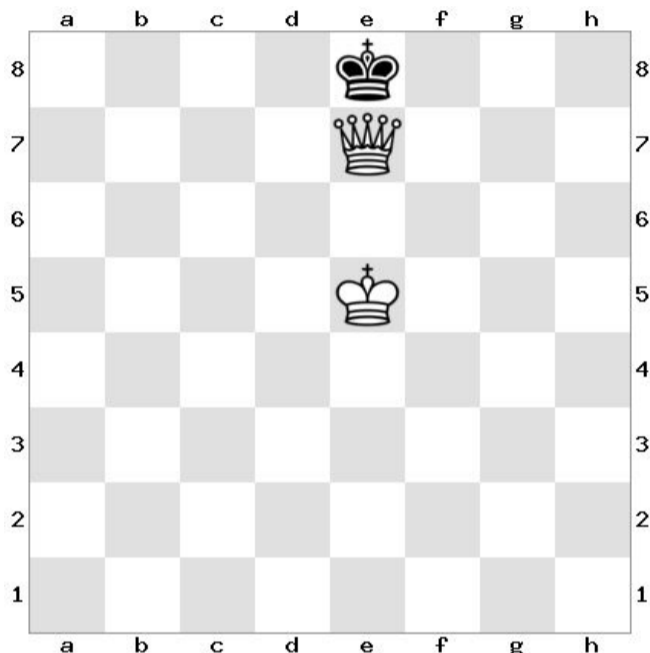
Black to play. Black is in check from the white queen. Black can get out of check by moving the rook to g7.



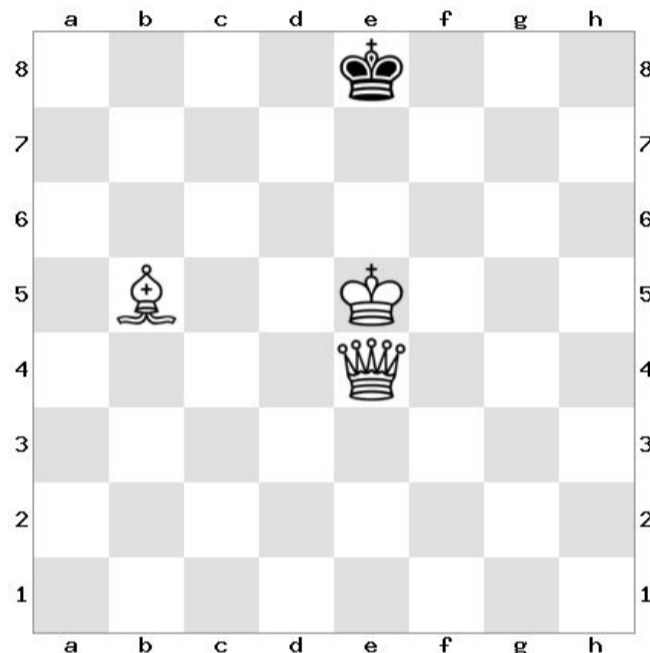
A king can never be next to the other king. They would both be in check. This position is against the rules.

Jaque

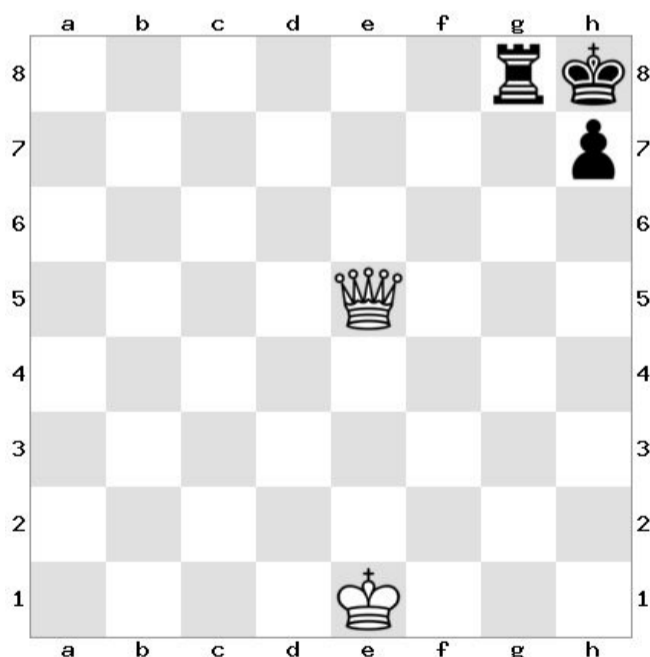
- El jaque es un ataque (amenaza de ‘capturar’) al rey.
- Debe salir del jaque si puede. Si no puede, es jaque mate y el juego se acaba.
- Para salir del jaque, 1) capture la pieza atacante, o 2) bloquee la pieza atacante, o 3) mueva al rey fuera del jaque.



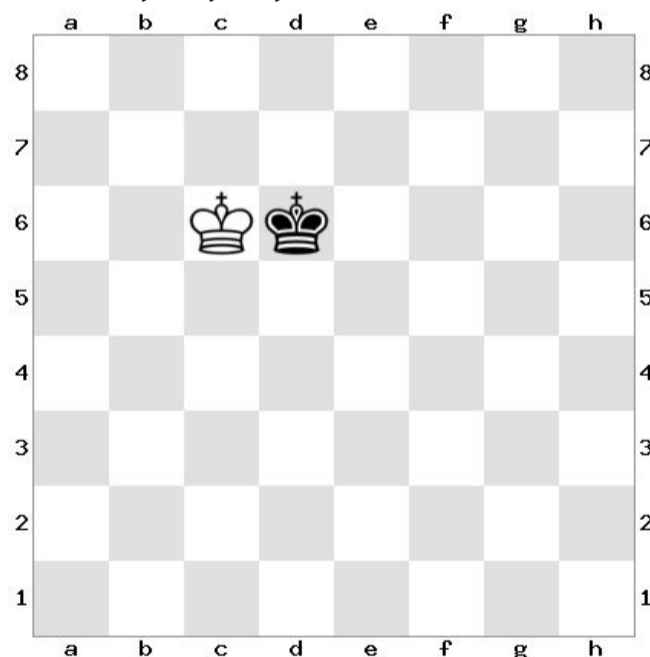
Juegan las negras. Las negras están en jaque de la dama blanca. Las negras pueden salir de jaque capturando a la dama.



Juegan las negras. Las negras están en jaque del alfil blanco. Las negras pueden salir de jaque moviendo al rey a d8, f8, e7, o f7.



Juegan las negras. Las negras están en jaque de la dama blanca. Las negras pueden salir de jaque moviendo la torre a g7.

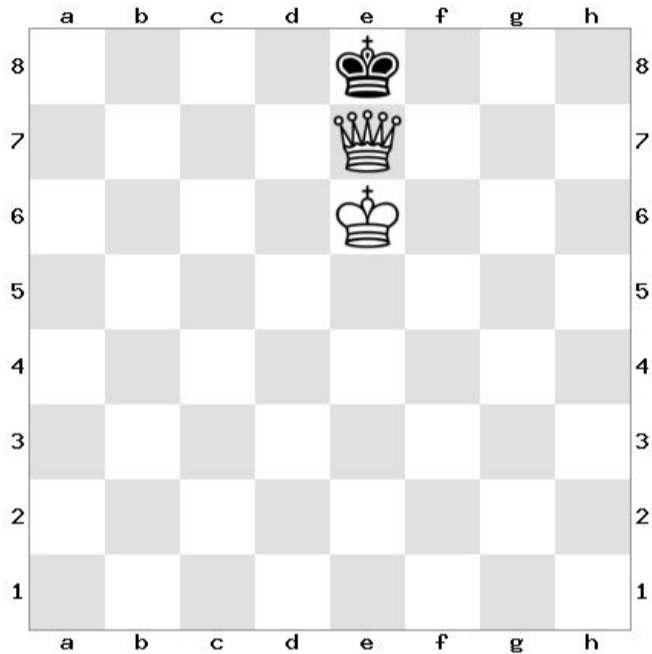


Un rey nunca puede estar al lado del otro rey. Ambos estarían en jaque. Esta posición está en contra de las reglas.

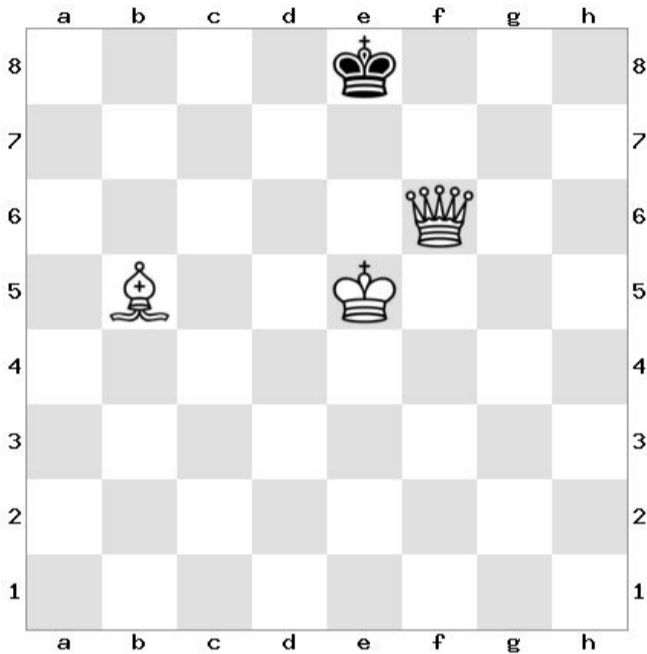
Checkmate

Checkmate and win!

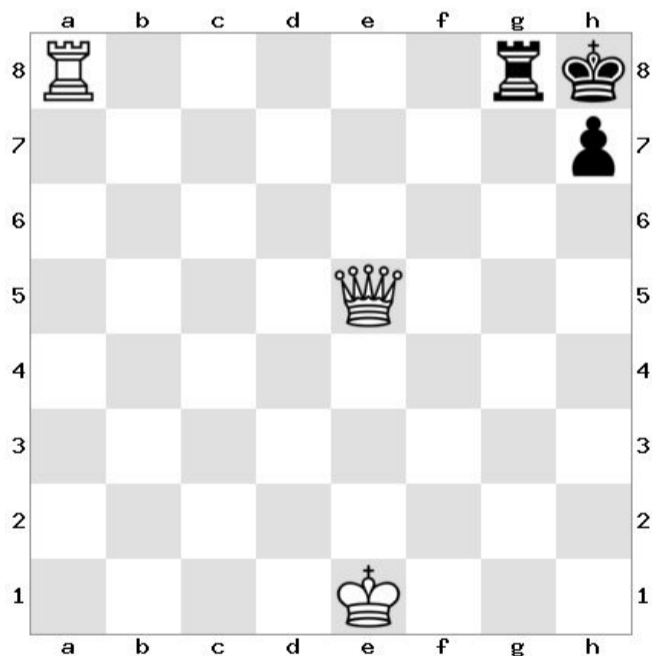
Checkmate is when the king is in check and cannot escape. When a player checkmates, they win the game.



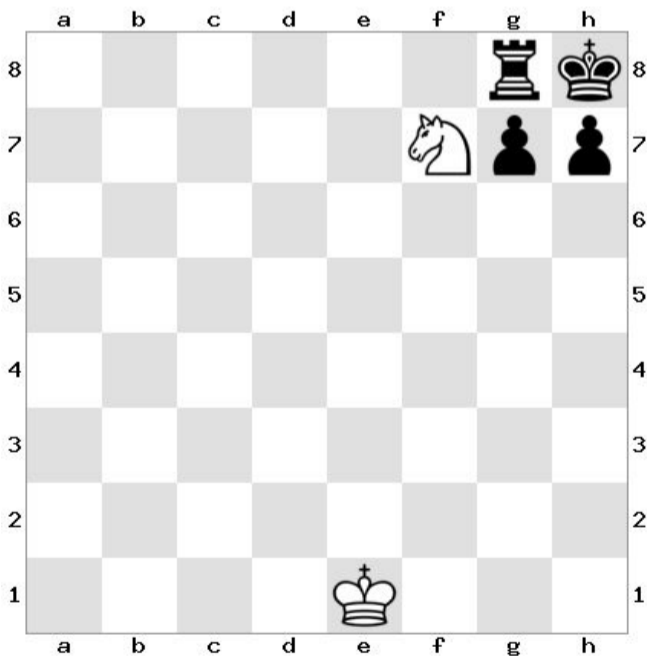
Black to play. Black is in check from the white queen. Black can't take the queen because it is defended by the white king. Checkmate.



Black to play. Black is in check from the white bishop. All squares the king could move to are attacked. Checkmate.



Black to play. Black is in check from the white queen. The black rook cannot move to block on g7 because that would be check from the white rook on a8. Checkmate.

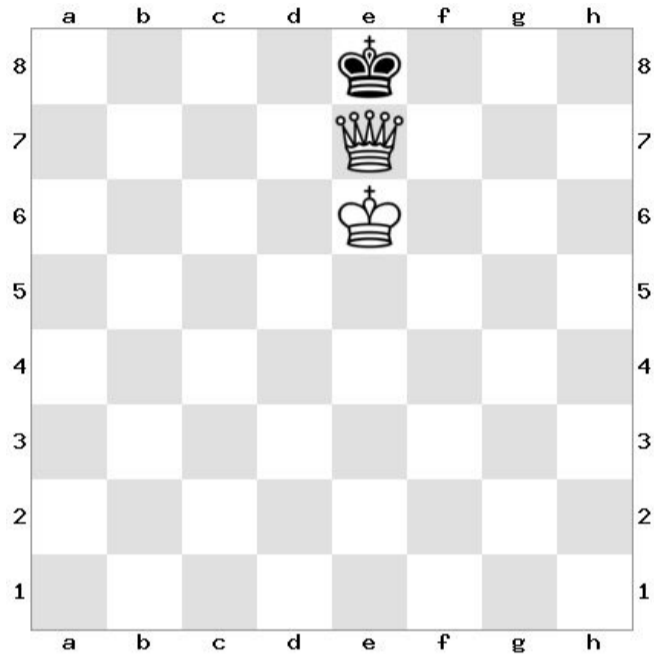


Black to play. Black is in check from the white knight. The king has no moves and nothing can capture the white knight. Checkmate.

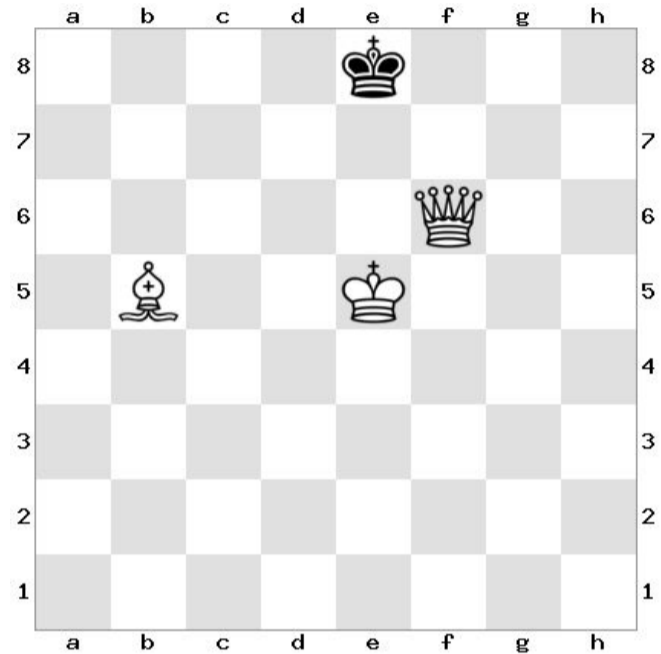
Jaque mate

¡Jaque mate y gane!

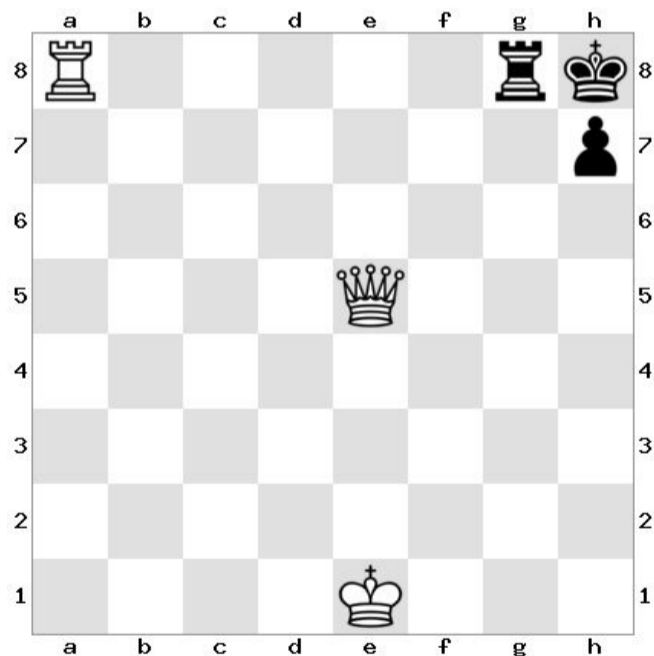
Jaque mate es cuando el rey está en jaque y no puede escapar. Cuando un jugador hace jaque mate, gana el juego.



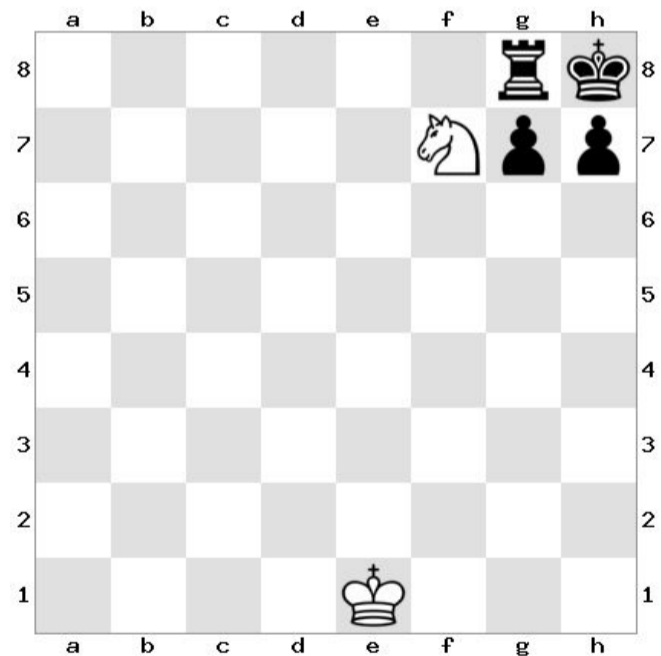
Juegan las negras. Las negras están en jaque de la dama blanca. No puede tomar la dama porque está defendida por el rey blanco. Jaque mate.



Juegan las negras. Las negras están en jaque del alfil blanco. Todas las casillas a las que podría moverse son atacadas. Jaque mate.



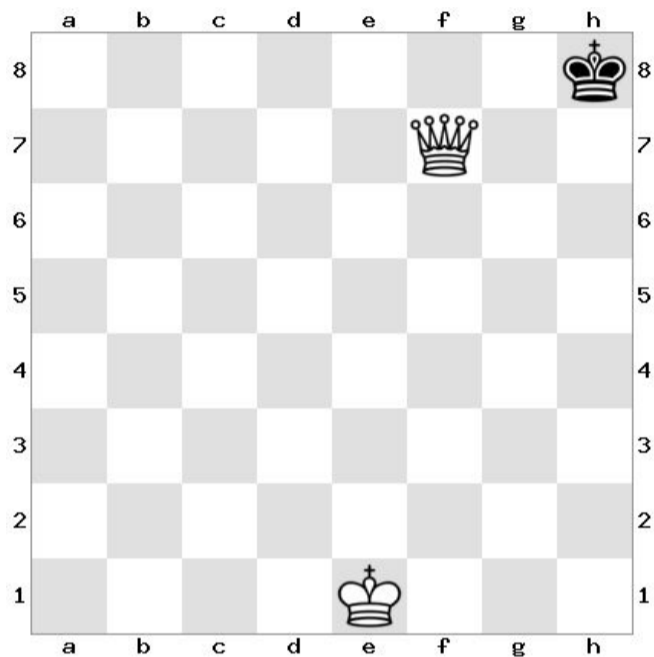
Juegan las negras. Las negras están en jaque de la dama blanca. La torre negra no puede moverse para bloquear en g7 porque eso sería jaque de la torre blanca en a8. Jaque mate.



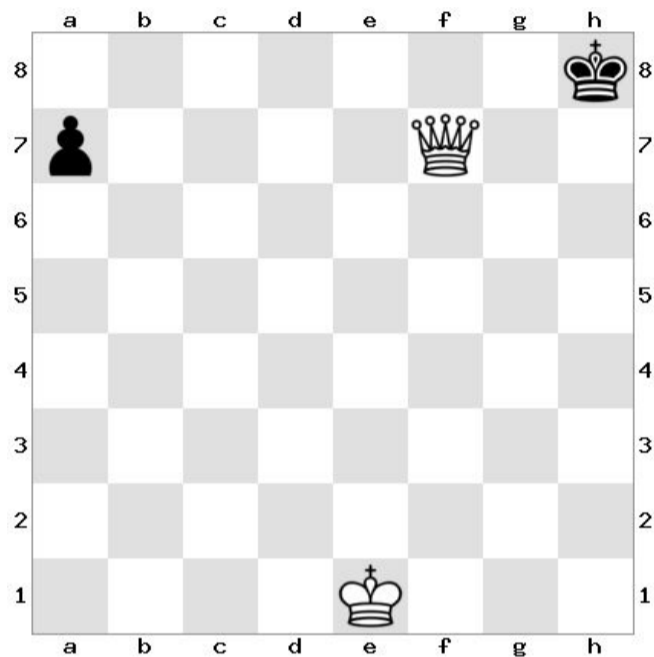
Juegan las negras. Las negras están en jaque del caballo blanco. El rey no tiene movimientos y nada puede capturar al caballo blanco. Jaque mate.

Stalemate

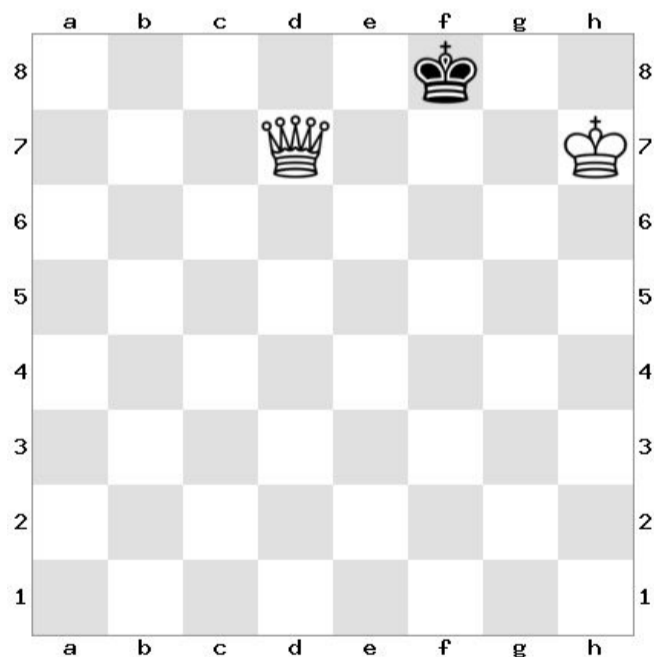
When the player to move is not in check but has no legal moves. Stalemate is a draw (tie).



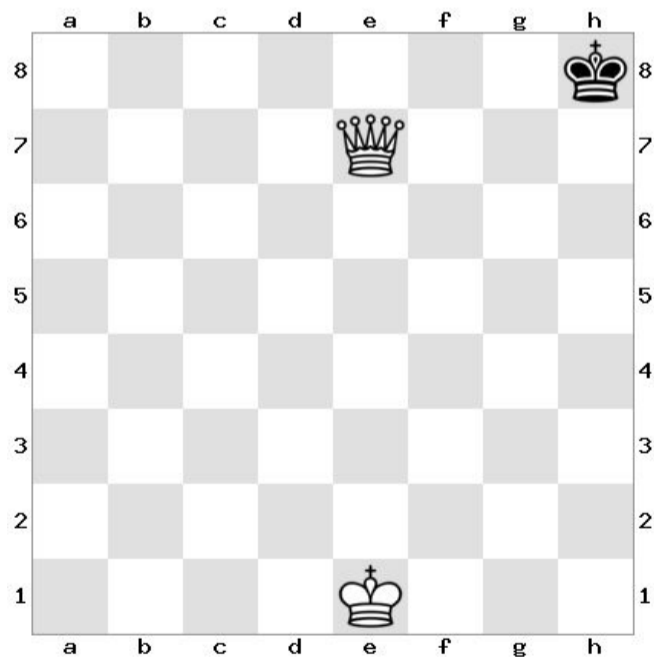
Black to play. Stalemate. Black is not in check and has no moves.



*Black to play. Not stalemate!
The black pawn can move.*



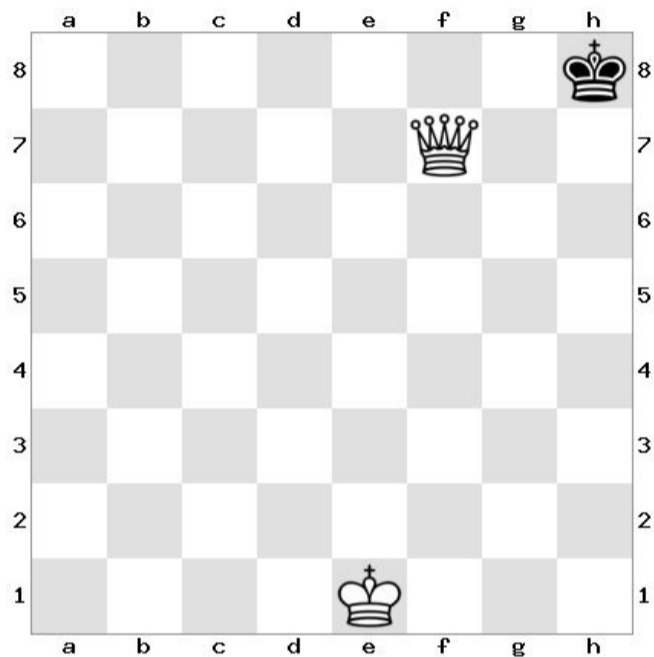
*Black to play. Stalemate.
Black is not in check and has no moves.*



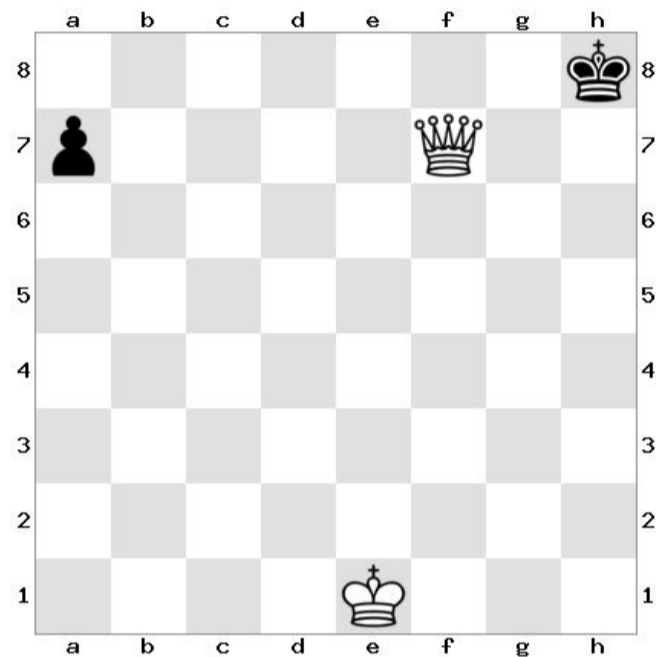
*Black to play. Not stalemate!
The black king can move to g8.*

Ahogado

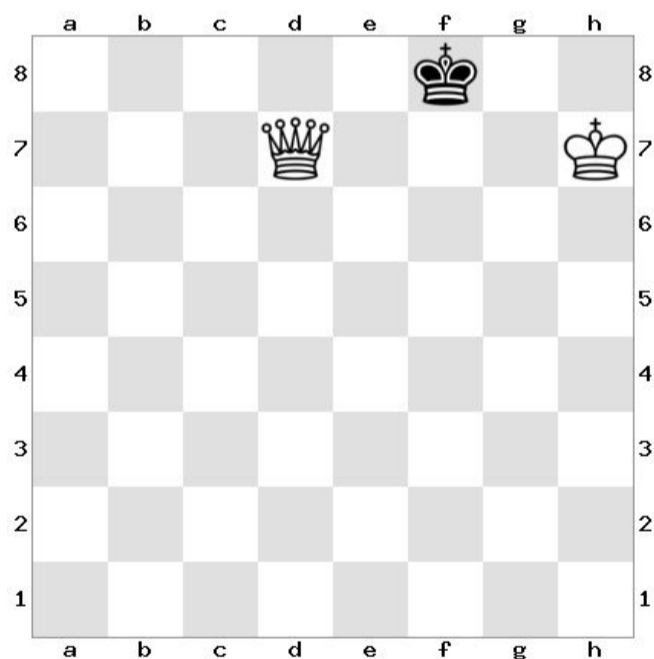
Cuando el jugador a mover no está en jaque y no tiene movimientos legales. Ahogado es un empate (“tablas”).



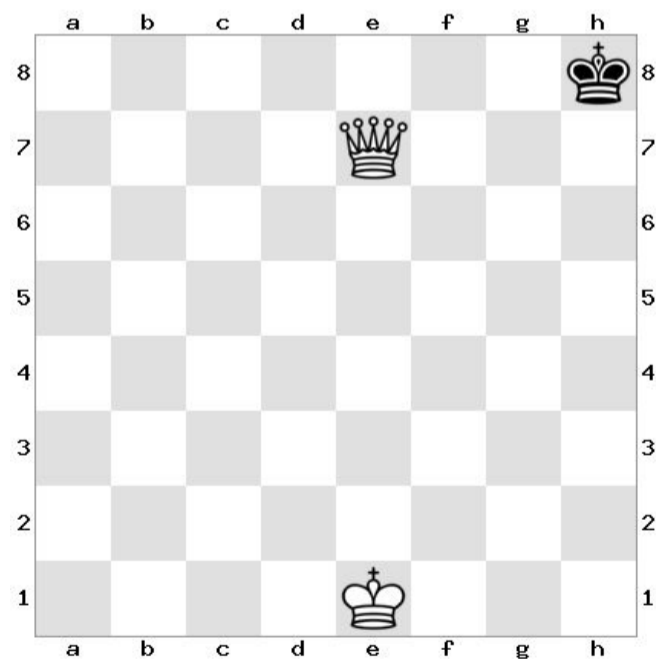
Juegan las negras. Ahogado. Las negras no están en jaque y no tienen movimientos.



Juegan las negras. ¡No ahogado! El peón negro puede moverse.



Juegan las negras. Ahogado. Las negras no están en jaque y no tienen movimientos.



Juegan las negras. ¡No ahogado! El rey negro puede moverse a g8.

Checkmate, Stalemate, Check or Move

In each position it is Black's turn. Is the position:

1. checkmate,
2. stalemate,
3. check (but not checkmate), or,
4. not check and not stalemate?

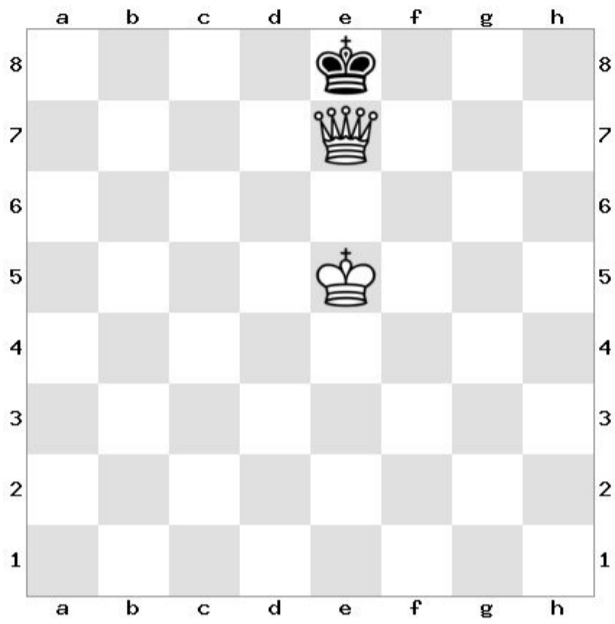
For 3 and 4 where can Black move?

Jaquemate, Ahogado, Jaque, o Movimiento

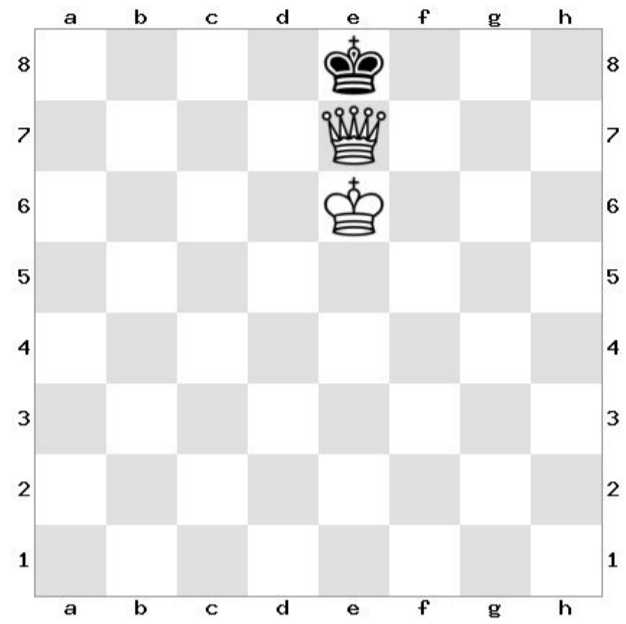
En cada posición es el turno de las negras. ¿La posición es:

1. jaque mate,
2. ahogado,
3. jaque (pero no jaque mate), o,
4. no jaque y no ahogado?

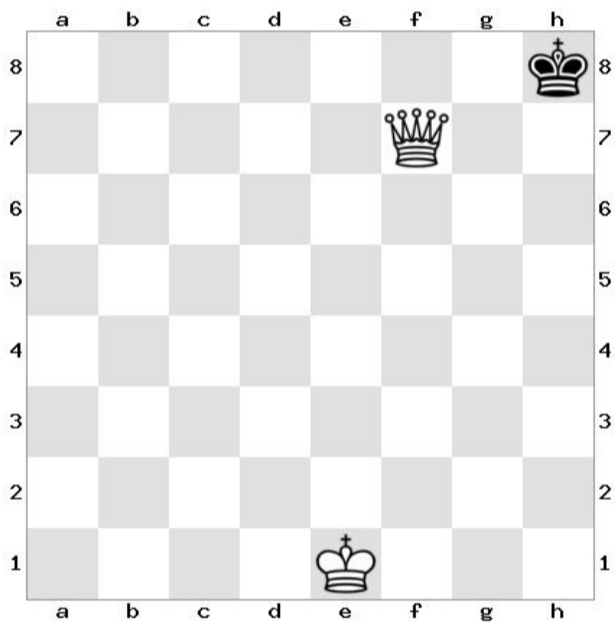
Para 3 y 4, ¿dónde pueden moverse las negras?



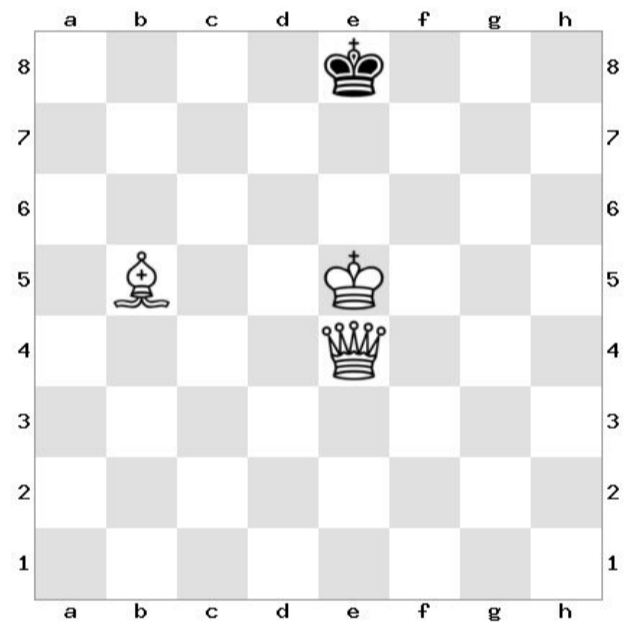
1



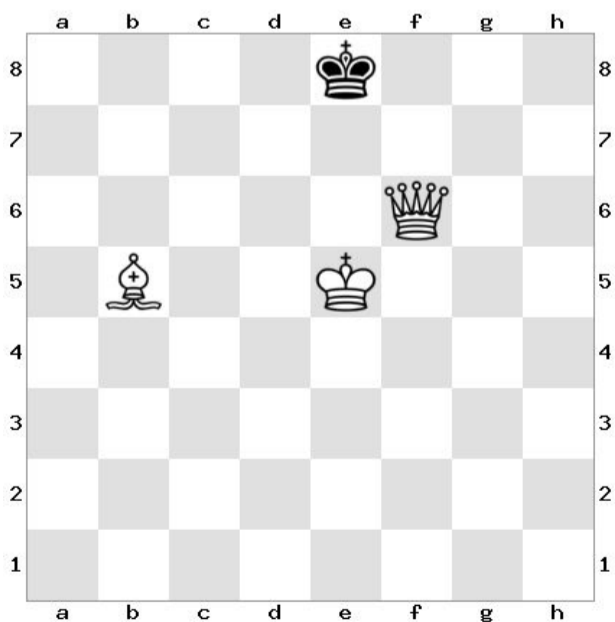
2



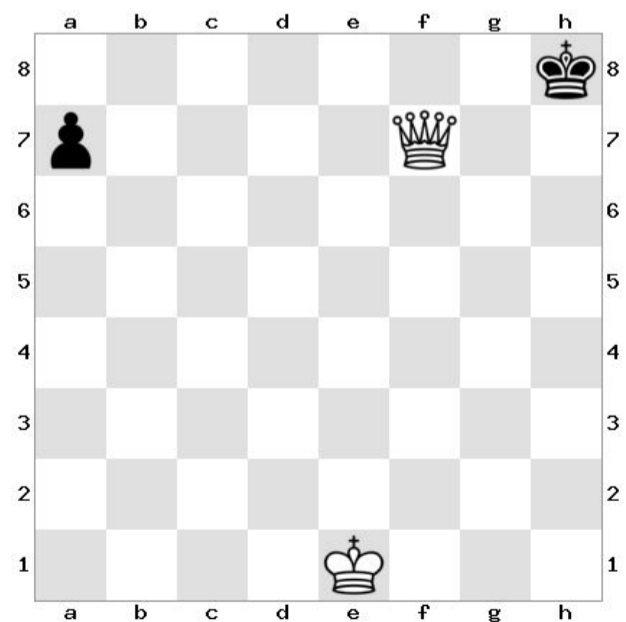
3



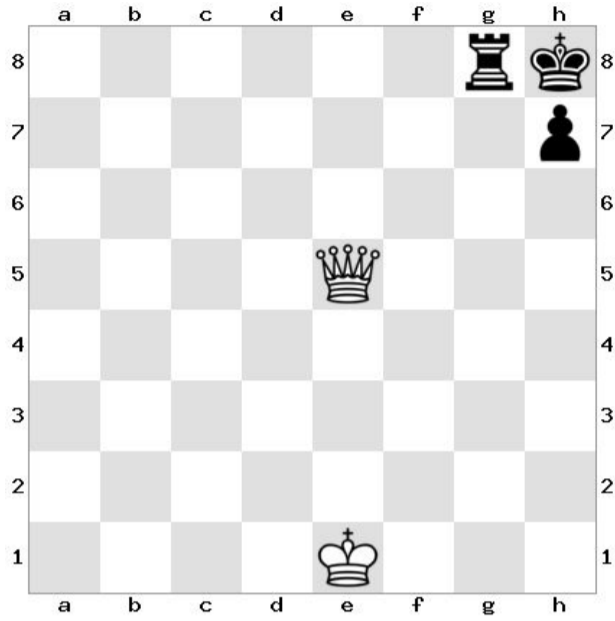
4



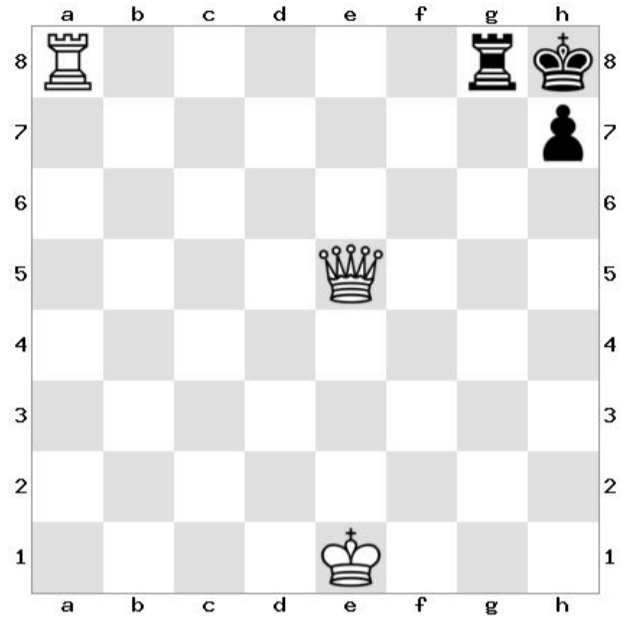
5



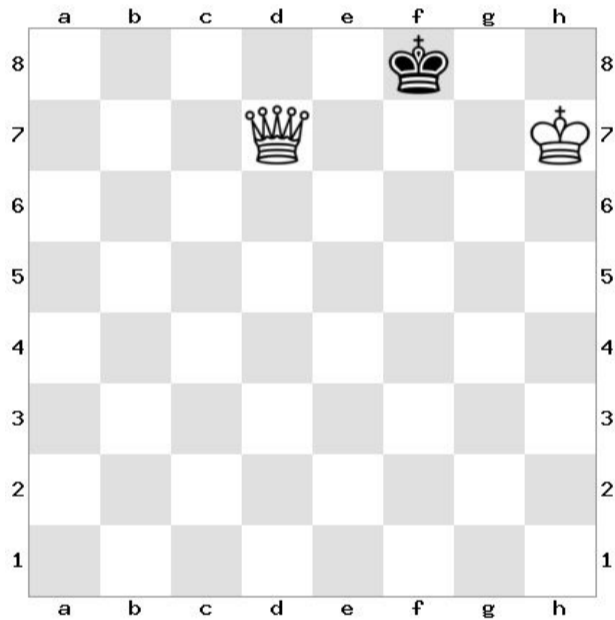
6



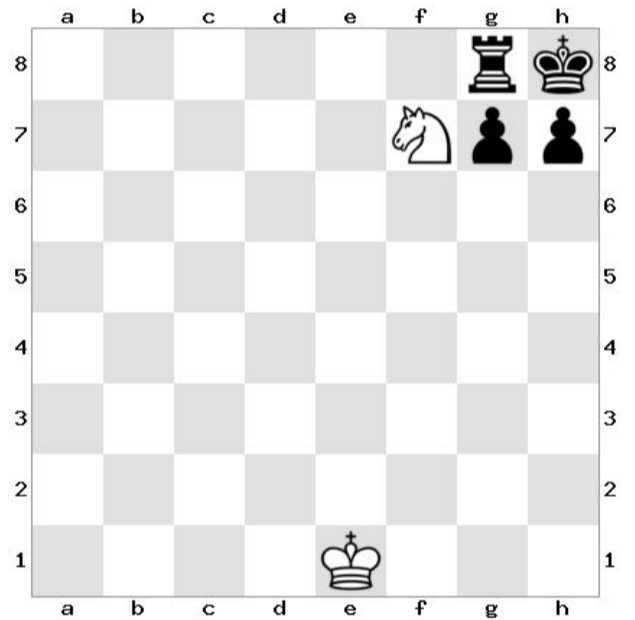
7



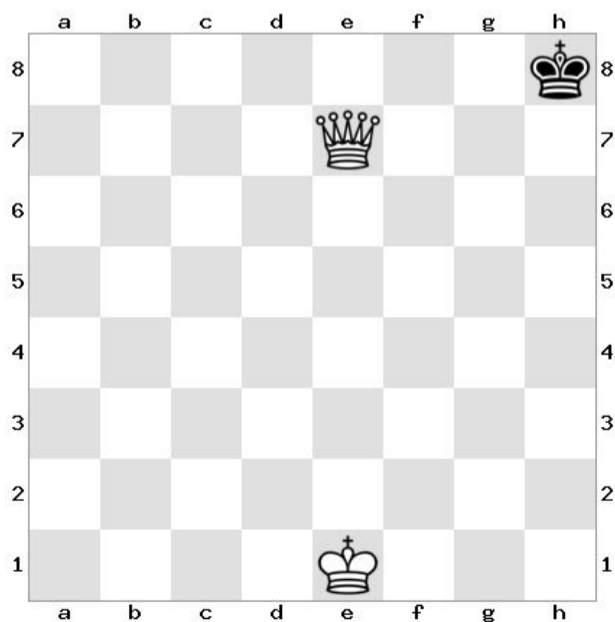
8



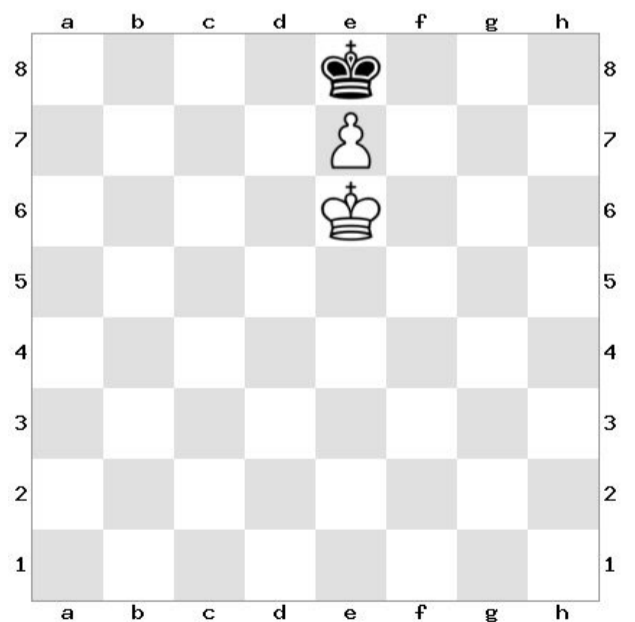
9



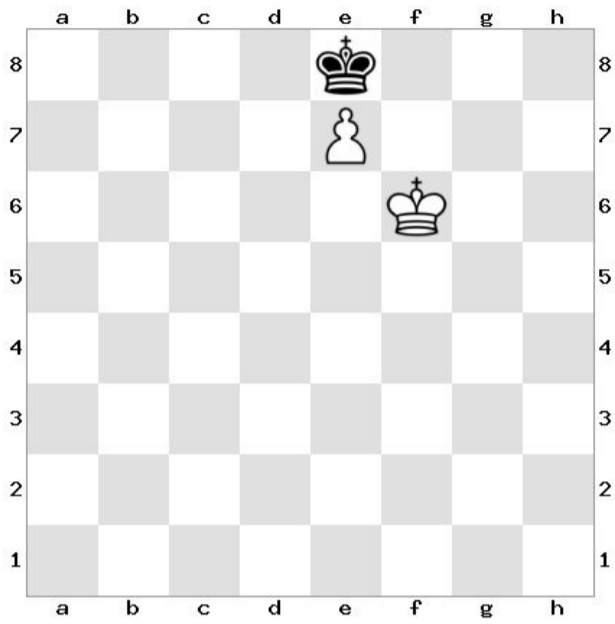
10



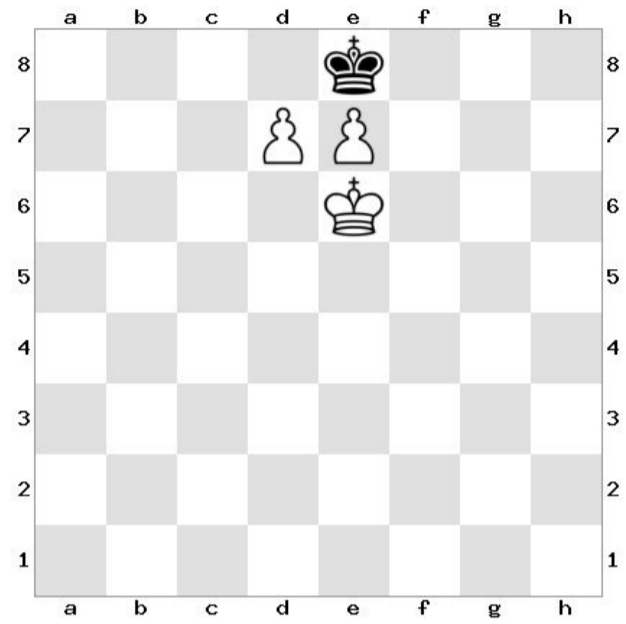
11



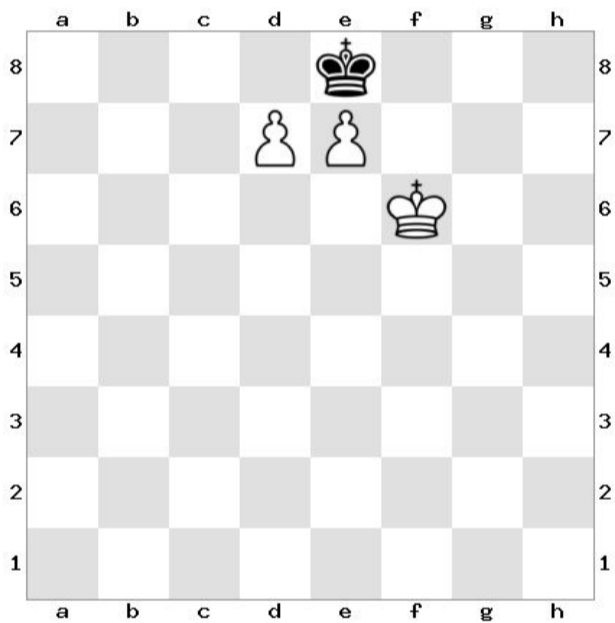
12



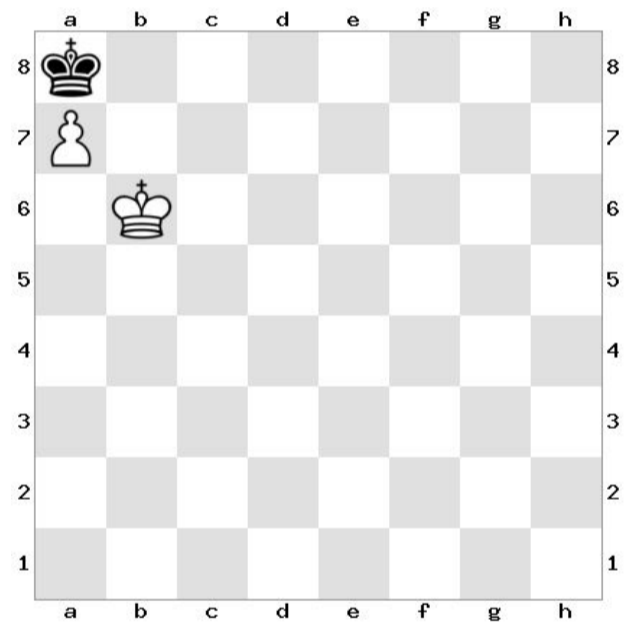
13



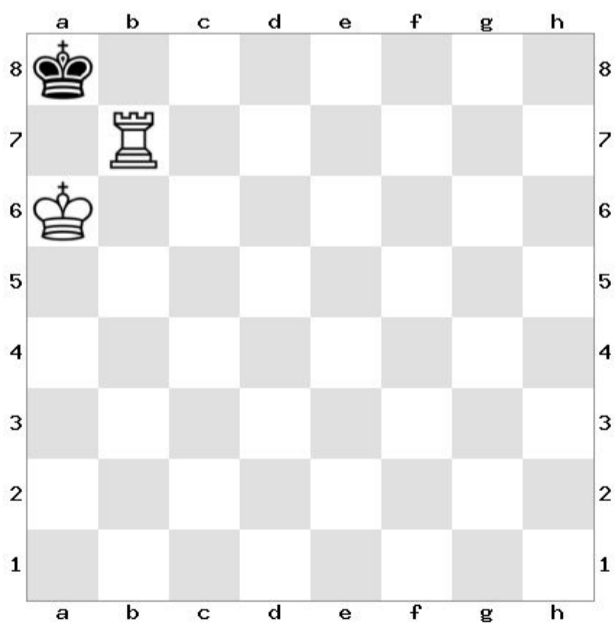
14



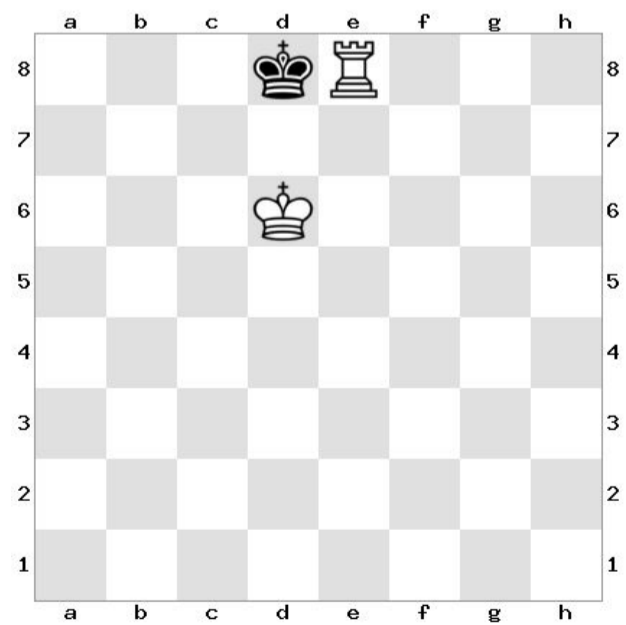
15



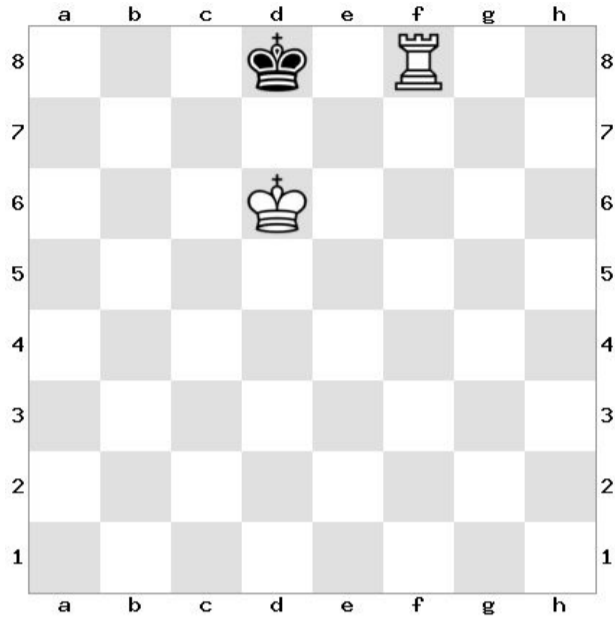
16



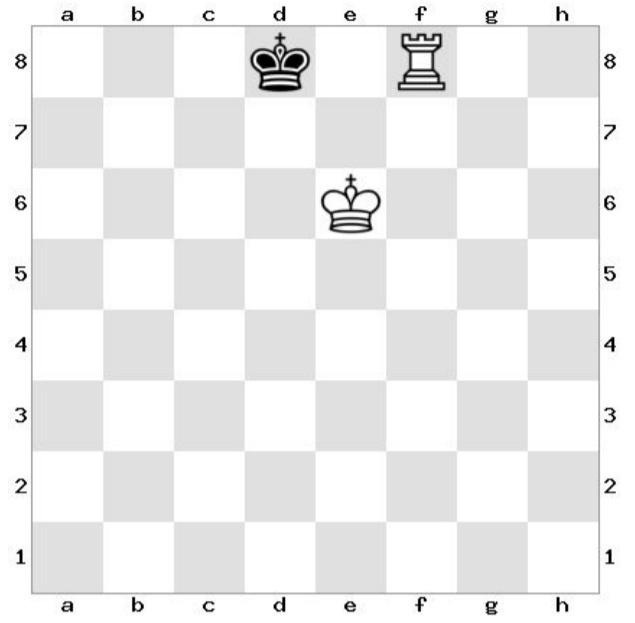
17



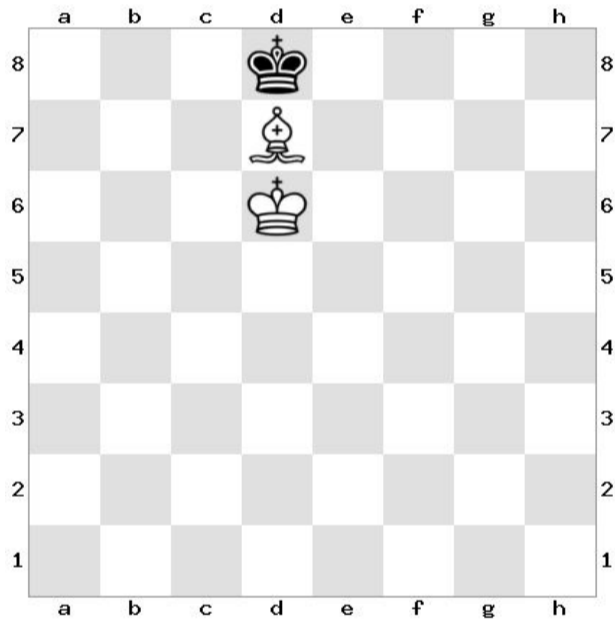
18



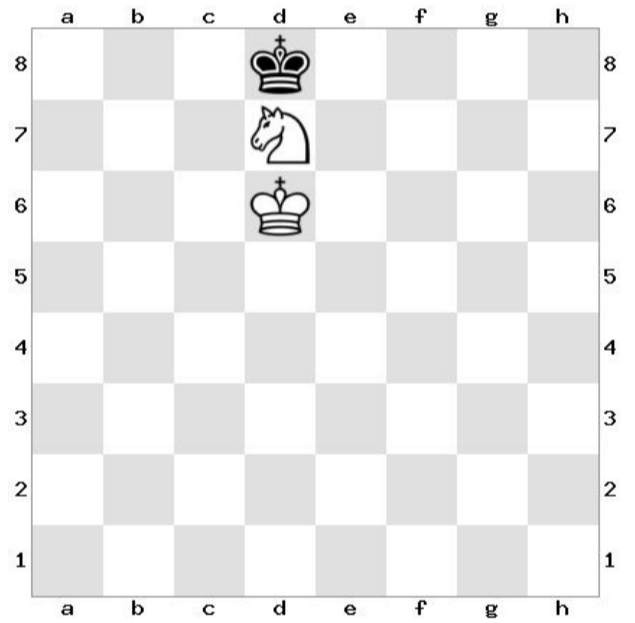
19



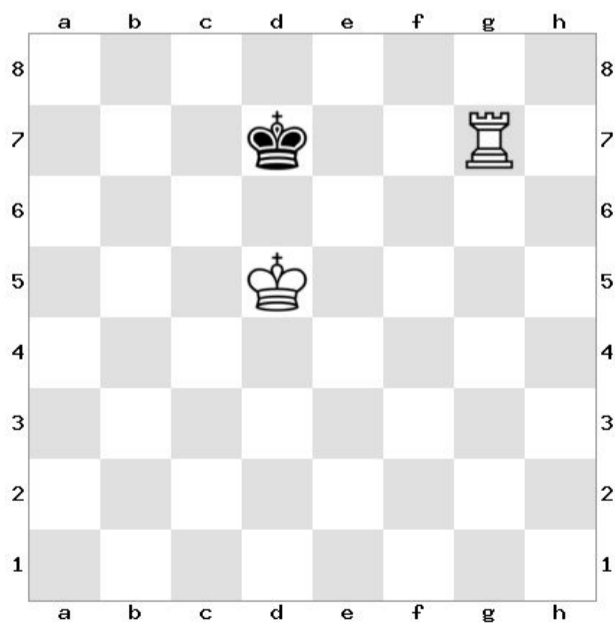
20



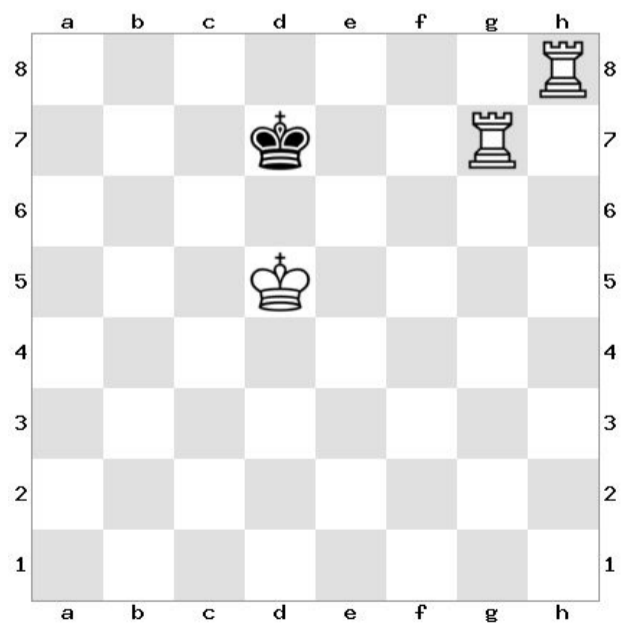
21



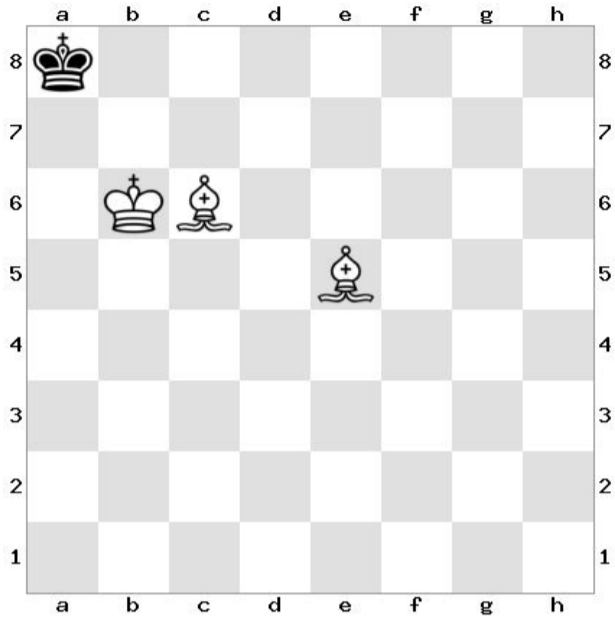
22



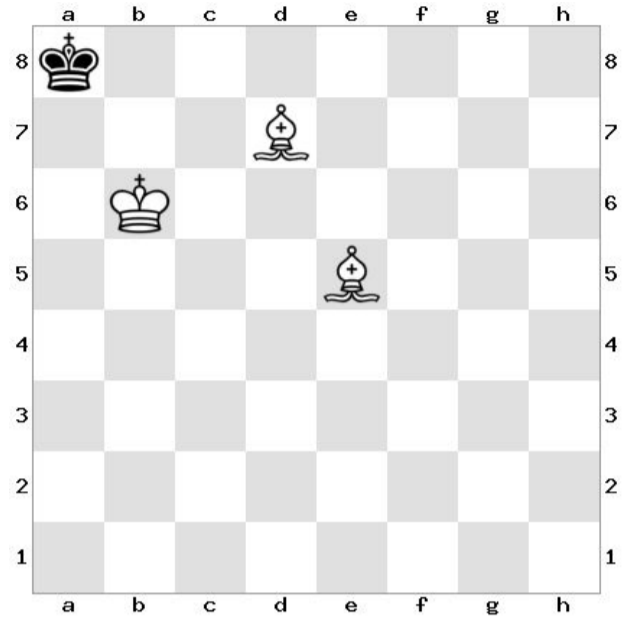
23



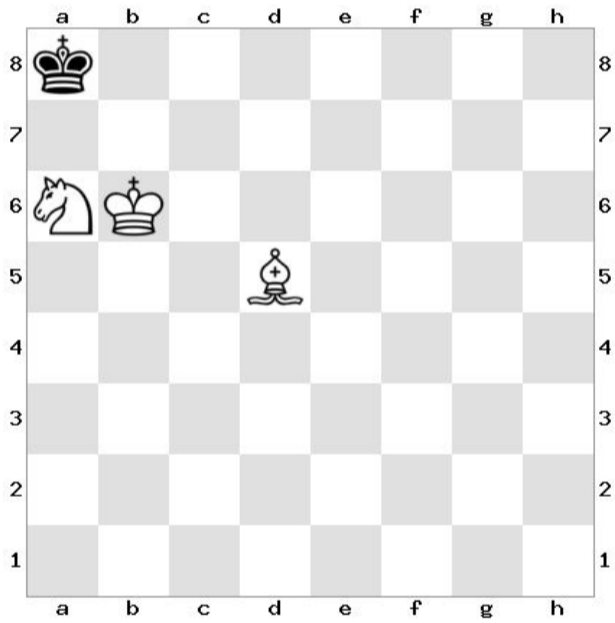
24



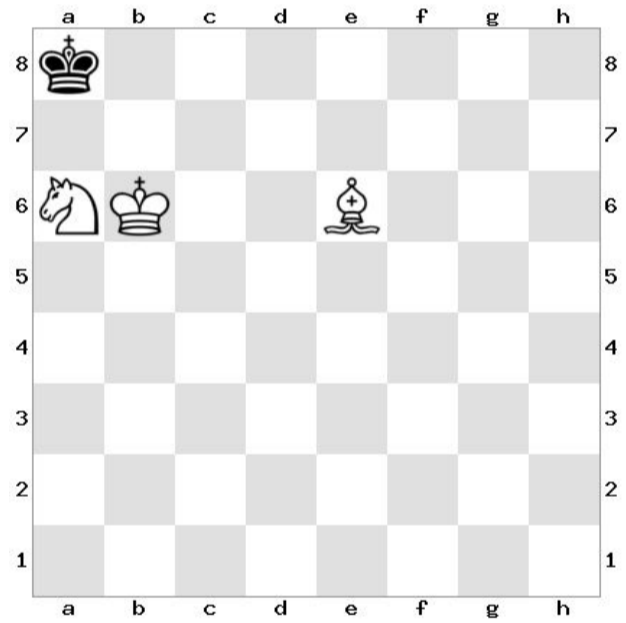
25



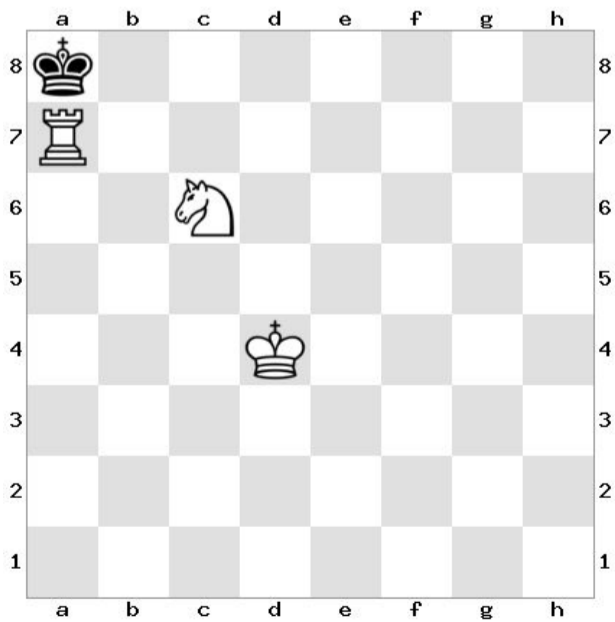
26



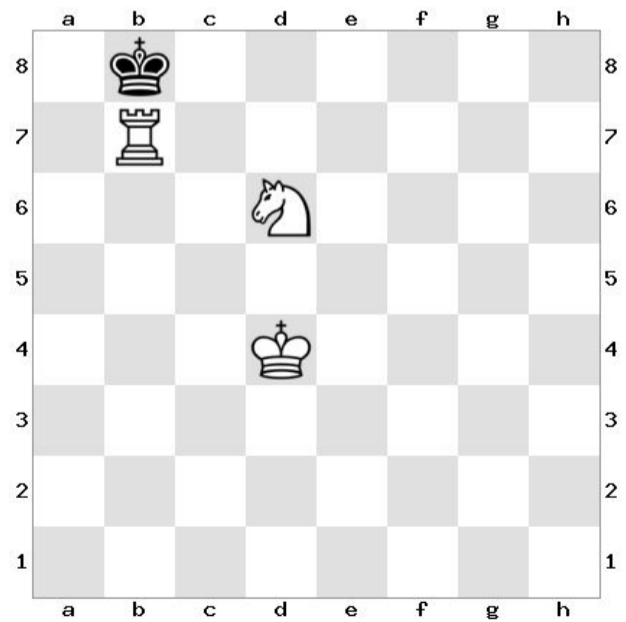
27



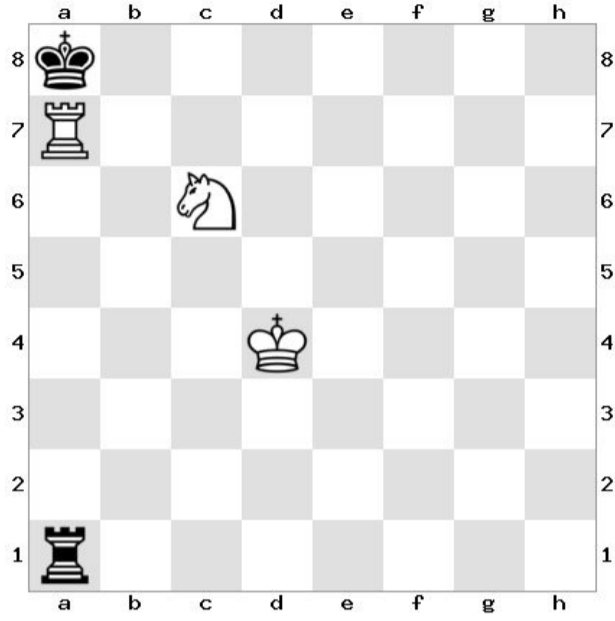
28



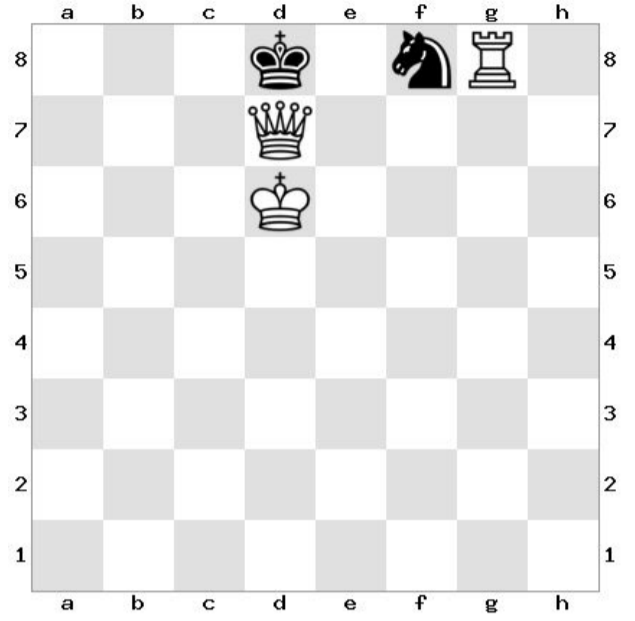
29



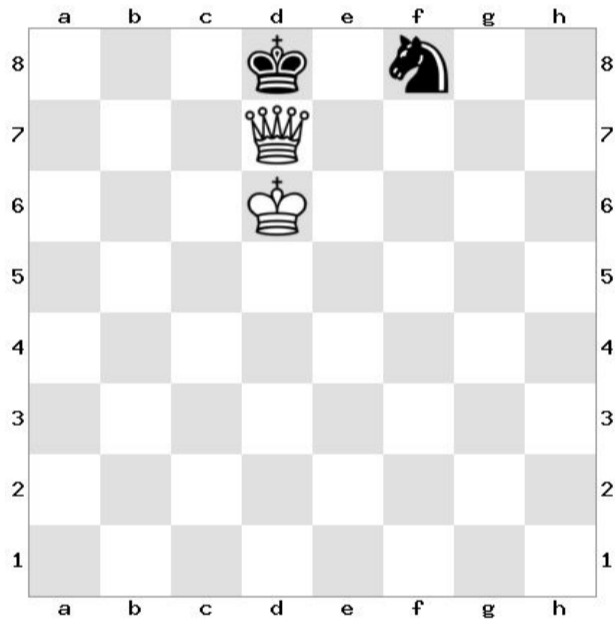
30



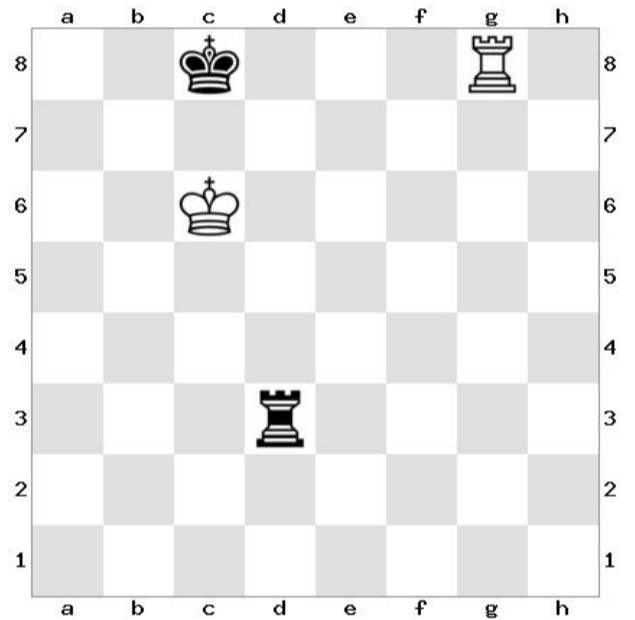
31



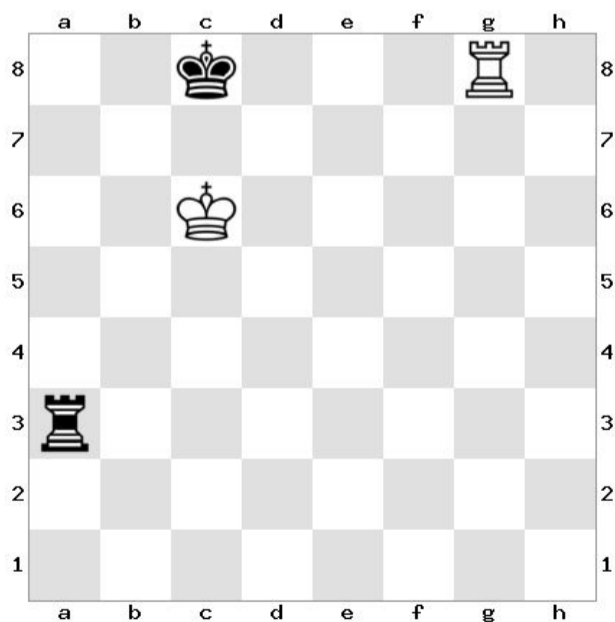
32



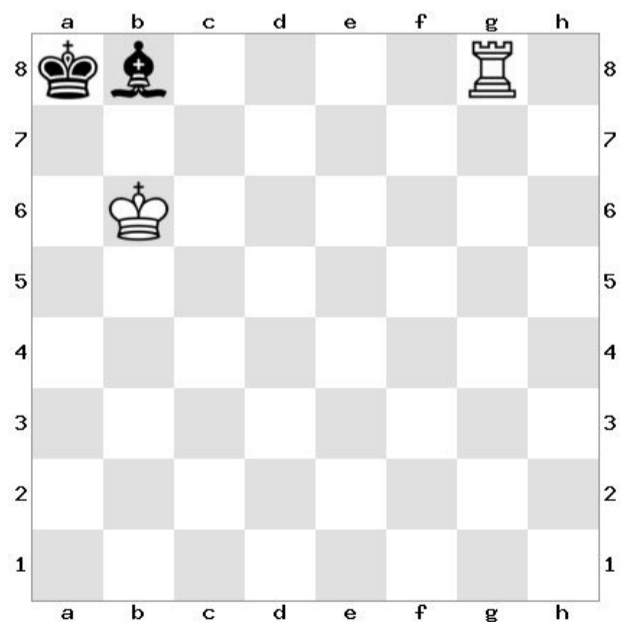
33



34



35



36

Answers

King K, Queen Q, Rook R, Bishop B, Knight N.

1. Check: Kxe7
2. Checkmate
3. Stalemate
4. Check: Kd8 or Ke7 or Kf7 or Kf8
5. Checkmate
6. Not Check and not Stalemate: a6 or a5
7. Check: Rg7
8. Checkmate
9. Stalemate
10. Checkmate
11. Not Check and not Stalemate: Kg8
12. Stalemate
13. Not Check and not Stalemate: Kd7
14. Checkmate
15. Check: Kxd7
16. Stalemate
17. Stalemate
18. Check: Kxe8
19. Checkmate
20. Check: Kc7
21. Stalemate
22. Not Check and not Stalemate: Kc8 or Ke8
23. Check: Kc8 or Kd8 or Ke8
24. Checkmate
25. Checkmate
26. Stalemate
27. Checkmate
28. Stalemate
29. Checkmate
30. Check: Ka8
31. Check: Rxa7
32. Checkmate
33. Check: Nxd7
34. Check: Rd8
35. Checkmate
36. Stalemate

Respuestas

Rey R, Dama D, Torre T, Alfil A, Caballo C.

1. Jaque: Rxe7
2. Jaque mate
3. Ahogado
4. Jaque: Rd8 o Re7 o Rf7 o Rf8
5. Jaque mate
6. No Jaque y no Ahogado: a6 o a5
7. Jaque: Tg7
8. Jaque mate
9. Ahogado
10. Jaque mate
11. No Jaque y no Ahogado: Rg8
12. Ahogado
13. No Jaque y no Ahogado: Rd7
14. Jaque mate
15. Jaque: Rxd7
16. Ahogado
17. Ahogado
18. Jaque: Rxe8
19. Jaque mate
20. Jaque: Rc7
21. Ahogado
22. No Jaque y no Ahogado: Rc8 o Re8
23. Jaque: Rc8 o Rd8 o Re8
24. Jaque mate
25. Jaque mate
26. Ahogado
27. Jaque mate
28. Ahogado
29. Jaque mate
30. Jaque: Ra8
31. Jaque: Txa7
32. Jaque mate
33. Jaque: Cxd7
34. Jaque: Td8
35. Jaque mate
36. Ahogado

